

St Chad's Anglican Church Fullarton

PARISH PROFILE 2025

Our Vision

Growing Faith, Building Community and Serving Needs

via

Inspiration~ Imagination~ Cooperation



St Chad's Anglican Church in Fullarton, Adelaide is an inclusive, friendly, open-minded Christian community for all ages. We combine the best of contemporary and traditional approaches to worship and spirituality

We express our gratitude to the Kaurna people of Warriparinga land for their continuous care of this ancient country for thousands of generations and for the sharing of this land that was never ceded. We walk softly alongside First Nations people as allies committed to seeking guidance, listening with purpose, and acting with courage in our future together

CONTENTS

Introduction

History

Location

About the Parish

Our Parish

- Worship

- Congregation size

- Lay Participation

- Outreach

- Partnerships

Governance and Planning

- National Church Life survey

The Future

Conclusion

<https://www.facebook.com/StChadsAdelaide/>

<http://www.stchads.org.au>

<https://my.ncls.org.au>

Attachments: Profit & Loss year ending December 2024

First Draft Budget year ending December 202

INTRODUCTION

The congregation of the Parish of St Chad's Fullarton is looking forward to welcoming our next Parish Priest. Our vacancy came about due to the retirement of our previous Priest.

St Chads has a vacancy for a 0.5FTE position. In order for the Parish to remain financially viable the Rectory will need to continue to be rented out.

One of the main Core Qualities identified in the National Life Survey 2021 as important to St Chad's congregation was Leadership. We have a highly skilled congregation who participate in the leadership of the church.

St Chad's is a friendly, theologically progressive church that celebrates the love of God with emotional and intellectual curiosity. We are committed to the sacredness of each individual and welcome and embrace diversity.

A Parish Consultation was carried out to seek views on Parishioners expectation of a new Priest. There was consensus that we are seeking a Priest who:

- Has experience of working collegiately with Parishioners.
- Is welcoming and approachable, with a sense of humour and ability to show empathy.
- Is committed to supporting a contemporary spirituality
- Is inclusive of all in terms of age and culture and can uphold St Chad's commitment to reconciliation with our First Nations' Peoples
- Supports and openly affirms the LGBTIQ+ communities and individuals.
- Is committed to Pastoral Care

HISTORY

St Chad's was originally built in 1920. Following a fire which destroyed the church in 1990 the current building was erected in 1992.

Architecturally it is a modern, light and airy space with chairs rather than pews. It has a Celtic cross above the altar, the design of which was taken from an illumination in the Lindisfarne and Lichfield Gospels.



The Celtic foundations of St Chad have come to inform many aspects of the parish through music, prayer, service formats and hospitality.

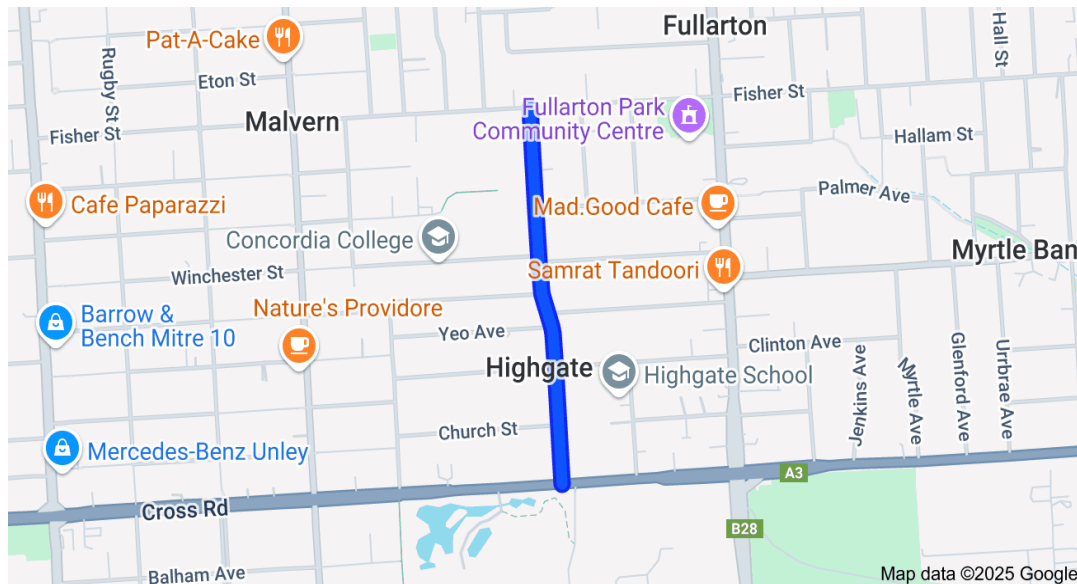
St Chad's Anglican Church Fullarton has links with and contributes to Chad's Network. Chad's Network is a fellowship, linking all institutions and people with an association with St Chad, from churches and schools to Universities and Cathedrals. Folk contribute from UK, Australia, New Zealand, US.

Committed to connecting faith, family and friends, the parish is a vibrant lively society of people. St Chad an English Bishop died on 2nd March 672CE. This date is still observed in the Parish as St Chads Day.

We continue our commitment to Chad's work of healing, faithfulness and building Christian unity and community in an imaginative way.

LOCATION

St Chads is situated south of Adelaide in the Unley City Council area, in the suburb of Highgate which is about 6 klms from the CBD. Highgate is a charming suburb with a number of shops and cafes, with easy transport to the Adelaide Hills and the CBD. The church is about 5 minutes' walk to Highgate Village.



Walford Anglican Girls School is close by and there are a number of Government and Co-educational schools in the area including Urrbrae Agricultural High School which is within easy reach. St Chads has a close connection with Concordia Co-educational School. The senior classes give of their time twice a year to help with gardening, odd jobs etc at St Chads.

There are also a number of sport and recreational facilities close to ST Chads e.g. Unley Sports Club: football, tennis, bowls etc and Grasshopper Soccer at Urrbrae. Council parks and reserves, include tennis courts, playing fields, sporting facilities and open spaces.



From Highgate [a short bus ride] there is easy access to bushland for people living in urban Adelaide. There are many conservation areas of great interest i.e. Waite Conservation area which provides a beautiful and tranquil environment for bushwalking, birdwatching and other quiet recreation.

ABOUT THE PARISH

The Church is an architecturally modern building with chairs (no Pews) with a welcoming Narthex on its West side. It can seat over 140 people [more if the Narthex is included] and is air conditioned. There is a Vestry, two meeting rooms a small one adjacent to the office and a medium sized room off the main hall.



The multifunction Parish Centre was updated in 2006. It is an airy light filled space overlooking our Community Garden. The parish is fully air-conditioned and carpeted with access to toilets [including disabled], a kitchen and internal and external services. The compact kitchen has an industrial dishwasher, stove, refrigerator urns, double sink and white crockery. It can accommodate approximately 80 people for a sit-down meal.

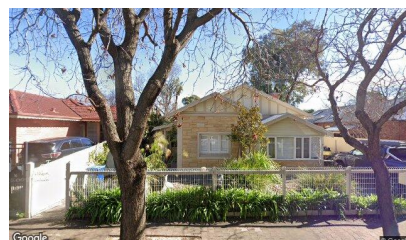
A number of neighbours have used the centre for various events over the years. We see this as means of community engagement. We have sound relationships with our neighbours, who support our Fayre each year.

Hire of the Parish Centre contributes to our overall finances and our connection with community. Hall Hire requests have increased over the past two years with people describing premises as excellent with a lovely sense of calm. There are a number of regular hall hirer users: and a few irregular users e.g.:

- Weekly Yoga group over a period of 10 years
- Two meditation groups ,one weekly and another for adults and children which is more irregular.
- A massage therapy practitioner.

Rectory

Our Rectory 7, Moore Street Fullarton 5063 is currently rented out through Evans and Ayers. This will need to continue. Details of layout can be obtained from them.



OUR PARISH

Worship

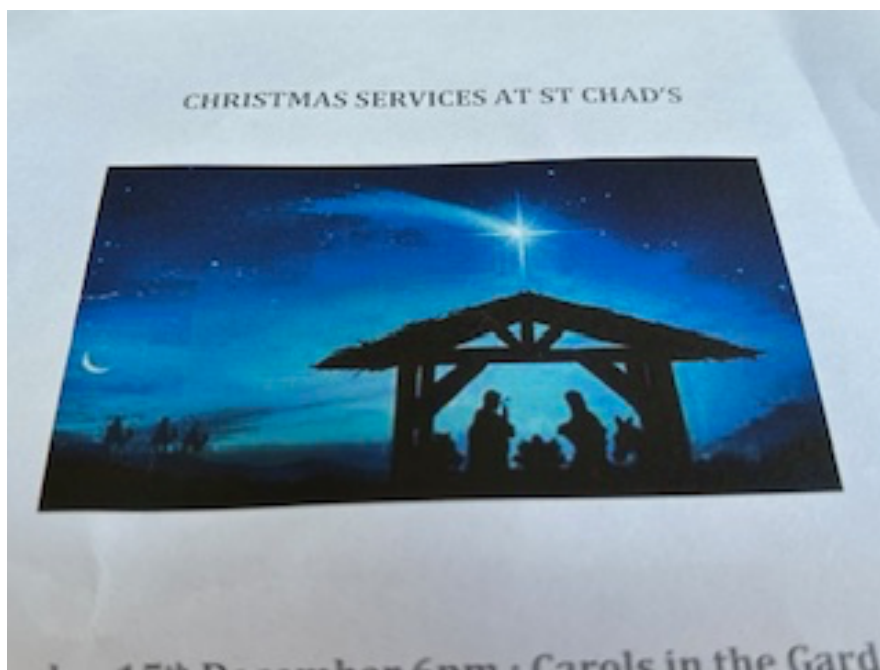
The Parish is an inclusive, open-minded and friendly community where traditional and contemporary worship styles happily co-exist. Lay participation is encouraged via lay assistants at services, intercessions written and delivered, Bible readings, occasional homilies and liturgy meetings.

At present there are two main services per week. Sunday 9.30am with a Healing Service on the 4th Sunday of each month. Midweek service on Thursday morning followed by a Christian meditation group led by a Priest or Parishioner. Traditional and contemporary worship styles use a wide variety of sources, e.g. Australian Anglican Prayer Book, the New Zealand Anglican Prayer Book, Taizé and the Iona Community. Traditional hymns and songs are woven into the worship services.

We have a regular pianist and three Parishioners who on special occasions lead the congregation in singing.

Currently we have no specific children's ministry. We do have a Children's Corner which is always available for children's entertainment during services.

There are also a range of worship events that have a regular place in the Parish calendar. These include, Carols in the Garden, Maundy Thursday, Palm Sunday, St Chad's Day.



Congregation Size

There are currently 67 entries on the Parish Role.

Around half dozen parishioners are under 50 years old and the average age of the remainder of the congregation is greater than 65 years. In the last year we have welcomed 4 regular new members to our congregation, in addition to 2 families with young children (under 4 years old) and one family with teenage children. There has been three new PGP givers in the last year.

An average of between 30-40 people attend our 9.30am Eucharist and there is a weekly service at 10.30 am followed by a Christian meditation.

Lay participation

We create a safe and nurturing environment where parishioners are encouraged to use their gifts. We currently have lay participants who support with weekly office administration, prepare weekly rosters for welcomers, morning teas, flowers and sacristans.



At special events many members of the congregation contribute: e.g. The Fayre, The Quiz Night, St Chad's Forum, Carols in the Garden etc.

We also have a number of creatives who share their talents in numerous ways e.g. Painting of the Cross by Annabel



Outreach

At St Chads making connections with the local community has had a strong and growing emphasis. Community engagement is also via Parish Centre hirers (yoga, meditation groups, palliative massage therapy). Further community engagement via our:

Community Garden,
Quiz Night,
Annual Gay Pride Service
Annual Bless Your Pets Service,
Continuing participation in the Anglican Rainbow Network
Annual Carols in the Garden Service
Annual Fayre
Women's Thursday Group
Reconciliation Group
St Chads Forum [topics have included: Homeless & Housing Affordability; Over Population 'The Elephant in the Room'; Reconciliation; Disability].

Partnerships

- St Mary Magdalene – 4 times a year St Chads' is rostered to supply and serve meals to between 60 and 100 homeless people in Adelaide.
- Anglican Rainbow Network
- Potential to collaborate with neighbouring churches, particularly in Reading of the Passion on Palm Sunday, participating in fund raisers etc.

Age specific ministries are undertaken by the Paroral Care Committee. The Parish Priest and volunteer laity undertake Pastoral care home visits.

Governance and Planning

St Chad's Parish ministry sits in the context of a Christian community where everyone's gifts are valued and where ministry is collaborative, non-hierarchical, and mutually enriching for all.

The Parish Priest is supported by the Parish Council who meet on the third Sunday of each month. Priest and Wardens also meet on an ad hoc basis outside Parish Council meetings when needed. Parish Council are kept informed of any decisions made and where appropriate and necessary motions will be proposed via email. All affairs of the church including Diocesan and government compliance are overseen by an active Parish Council, two Wardens and a Treasurer

Financial reports are prepared by the Treasurer and presented to Parish Council meetings each month. Our Annual budget and audited accounts are presented to parishioners at our yearly Vestry meeting in March.

Parish Council members including the People's Warden and Treasurer are elected annually at the vestry meeting. Weekly administrative support is provided by a member of the laity with assistance from Parish Council and Wardens.

Church Life Profile

St Chads has participated in a number of National Church Life Surveys [NCLS] over the years. The most recent in 2021 was impeded by COVID restrictions. There were 31 forms completed less than the previous year. Of the 31 forms completed; 47% found the preaching to always be helpful to their everyday life with 100% agreeing that Christians have a responsibility to actively care for the environment. Further 90% agreed it was easy to become involved in ministry and 57% agreed they were encouraged to find their gifts, talents and use them.

In the most recent survey, respondents have highlighted the following strengths as above average in St Chads Parish. These are measured against the average scores across a representative sample of Australian local churches.

- Innovation Always ready to try something new'
- Vision. Strongly committed to the vision for this church'
- Worship. 'Always experiences inspiration in church worship services'
- Belonging. 'Strength of belonging is strong and growing'.
- Service 'Number of different way attendees have helped others in 12 months
- Leadership culture. 'Agree that leaders encourage attenders to find their gifts and skills to a great extent'

These results would suggest that St Chad's is an active and engaged congregation with a commitment to their Parish. New members to our congregation over the past two years, including new families with 2 baptisms could be seen as growth.

THE FUTURE

A number of future planning sessions were held with the Parish Council and then with Parishioners over a period of months in 2024. It was reiterated that as a Parish we strongly identify with progressive theology and commitment in affirming our First Nations sisters and brothers.

There was also agreement that we would continue:

- To enhance our outreach work and engagement with our neighbouring community.
- Our current outreach and partnership commitments as previously stated.

Further we agreed to increasing our commitment to:

- Our program of events with emphases on – Reconciliation and actively supporting the LGBTI+ communities.
- Climate change by caring for our church and our local environment.

Challenges

We are aware that there will always be challenges especially given the ageing population of our congregation and suburb of Highgate and Unley City Council area generally. Underpinning all of our plans is a commitment to explore ways of engaging with all ages of our community.

There is a continued commitment from Parish Council to continue with careful financial management.

CONCLUSION

Our St Chad's family is warm and friendly, taking every opportunity for socialising from morning teas after services to quiz nights, the fayre, working bees etc. We are a theologically progressive parish that celebrates the love of God with emotional and intellectual curiosity and is committed to the sacredness of each individual. Diversity is not only welcomed but celebrated.

St Chad's parish continues in good heart and with a strong sense of purpose since the retirement of Rev Dr. Jo Armour. The Chad's family, led by our wardens, three retired clergy, and the nomination committee, has energetically taken on the new responsibilities that accompany an interregnum. Sunday worship and the following coffee times warmly embrace newcomers. We continue to promote our open acceptance of LBQTI+ peoples. We are working to provide more opportunities for parishioners and others who are interested to listen to the truths of our First Nations brothers and sisters. We're also currently exploring new ways of making our community more aware of the opportunities St Chad's offers.