

# ***St. Augustine's Church***

*183 Unley Rd, Unley  
South Australia 5061*



## ***Parish Profile 2025***



## *Welcome*

We are excited to introduce you to our community at St Augustine Anglican Church at Unley.

We are a parish that is committed to loving God, each other, and others. We seek to do this with greater effectiveness and much greater impact.

If you are reading this document, it is probably because you have heard that we are seeking a new parish priest. We are hoping that person can commence full time ministry during 2025. We are looking for someone who is deeply committed to Christ and to living out the two great commandments through prayer and creativity, justice and hospitality, learning and mission. Our hope is that our next ordained leader will use their ordination vows, in the power of the Holy Spirit to equip, lead and inspire our members to deepen faith and capacity to serve so our Church continues its desire for faithfulness in devotion and effectiveness in service.

And so, the big question is: could that priest be you - or someone that you know?

We pray that as you read this document you capture a glimpse of who we are and what exploring and developing faith, community and justice with us could look like. In this document we share a little of our Church and its surrounds, its' members past and present; ways in which we have been significantly Blessed and where we have significant opportunities. We hope and pray that, if you are being called to serve with us, you will be moved by these opportunities to become part of our St Augustine's family. We also share some of the practical and very real benefits of living and working in the beautiful Unley environment, within the diocese of Adelaide.

We are delighted that this document has made its way to you. We will be praying for you as you read and consider what this means for you and your family. If you are interested in finding out more, we would love to welcome you, to meet with us and visit our parish.

We really look forward to hearing from you.

# Demographics

## Geographic



St Augustine's Anglican Parish is located at 183 Unley Road, Unley 5061. An inner suburban local government area (LGA) located only 3 kilometres from the centre of the city of Adelaide. It is just a short walk past the picturesque South Parklands.

It is located adjacent to cosmopolitan coffee shops, restaurants and the extensive retail offerings of Unley and King William Roads.

The Council's village green is the physical heart of Unley and is located behind the church. This is connected to Unley Road via Church property that has been opened to the wider community via agreement with Council in recent years.

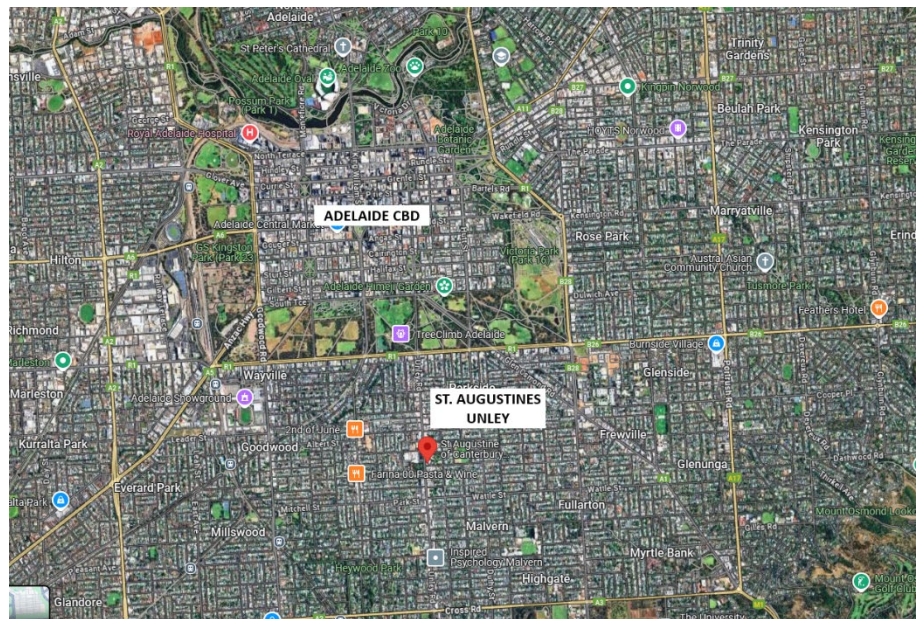
Around the corner is charming Unley Oval, the home of the mighty "Double Blues", Sturt Football Club.

In short, our Church is brilliantly positioned in one of the most vibrant and sought after corners of Adelaide.

## Population

The 2021 Census reports that the City of Unley has a population of 37,901, 10.0 % of whom are professed to be of Anglican faith. The second highest behind Roman Catholic.

The demographics of the population of Unley show a community who are



slightly older than the wider Adelaide metropolitan area. They are also more likely to be white collar, professionals with a higher-than-average income.

It is also an area of higher residential density than the average in greater metropolitan Adelaide adding to the very appealing cosmopolitan "buzz" of Unley.

Unley is a mixed cultural Local Government Area with Chinese being the 3<sup>rd</sup> largest ethnic group. Chinese people account (2021 Census) for 4.1% of the population, up from 3.2% in 2016.

The current parish profile of Unley includes two distinct ethnic groups. The original English-speaking congregation and more recently, a Mandarin speaking congregation, who joined the Parish in 2011.



At present approximately 70% of the English-speaking parishioners are in the 70 years and over age range. This is in contrast to the city of Unley demographic, where this age group represents only 17.6%. Our parishioners who fall in the higher age bracket are amongst the hardest working and the most effective members of the St Augustine's Community. We are hopeful that soon we will be adding to the amazing capacity of these women and men when we see an increase in the numbers of those attending St Augustine's. We will however continue to be inspired by and learn from our older parishioners.

The population of Unley is expected to increase between now and 2045 to 47,000. Much of this will be accommodated by consolidated mixed use development along the main roads, including Unley Road. This will bring greater opportunities and possibly greater demands. It is our very real desire that St Augustine's, which is positioned adjacent to these proposed new population growth areas, will be equipped, called and inspired to serve the growing residential groups.

### ***Schools***

There are several schools in the City of Unley, including both Private and Public and have had long historical association with the Parish.

Significantly, there are two Anglican Schools within easy access from the Church. Just a walk away is the Walford Anglican School for girls. On the other side of the adjacent parklands, on the southern perimeter of the CBD, is the Anglican college Pulteney Grammar School. Pulteney is a co-ed school. Walford, is a single sex girl's school.

### ***Quality Shopping***



Unley Road is one of the major shopping precincts of Adelaide, providing a wide a range of retail stores and services, and a popular Shopping Centre. As noted above, the church is only 3 kilometres from the Adelaide CBD.

King William Road is one of Adelaide's most prestigious and charming street shopping precincts and is located approximately 1 kilometre west of Unley Road.

### ***Sporting & Leisure Activities***

The nearby Unley Oval hosts Australian Rules Football and cricket and accommodates picnicking with electric BBQ facilities, a junior playground, and a shelter. It is popular with dog walkers all year round. It is the home also of a lawn tennis club and a lawn bowling club

There is wonderful potential for the Parish to increase its' presence, visibility and contribution to the strong culture of belonging that already exists within the community of Unley.



# ***Church Property***

## ***Church Property***

The Church property comprises 4 main buildings;

- The Main Church Building,
- The Original Church Building (currently occupied by Aggies Op Shop)
- The corner building (currently occupied by Educare used for Childcare)
- The Rectory, which is located at 86 Edmund Avenue behind the other buildings.



The lovely, large historic Rectory is a short walk from all the local facilities already mentioned. It is a 9 roomed house, complete with a separate Priest's office with its own entrance. The office is suitable for administrative work or for one-on-one counselling. The Rectory is fenced off from the main church area, maintaining its privacy and security. It has been very recently painted throughout and is a much-admired building. The Parish will carry out additional improvements according to the specifications of the new priest and His/Her Family

# ***Church History***

## ***The Buildings***

The Parish buildings are State Heritage listed and are located within the Community Facilities zone of the SA Planning and Design Code. The heritage status results from the combination of the Gothic architecture of the main church building, the existence of the William Morris Windows (more below) and the WWI memorial bell tower. Also of historical significance is the J C Bishop Pipe Organ.

The beautiful and historically very important windows have recently been significantly restored from bequests and fundraising activities. The present and past Congregations have acknowledged the importance of preserving and celebrating the Church's history and significant physical assets. We seek to be very good custodians of all that we have and to use those assets to serve the community, within and without the Church, and ultimately to build up the Church of Christ in so doing.

## ***A Quick History of the Church buildings***

St Augustine of Canterbury Anglican Church of Unley was first established in the original Church Building in 1870.

The Foundation Stone of was laid on 14<sup>th</sup> August 1869, by Lady Edith Fergusson, wife of the Governor of South Australia, in the presence of the first Bishop of Adelaide, Augustus Short. The need to accommodate the large number of worshippers attending the Sunday services necessitated the construction of a new building. The present church building was dedicated on 28<sup>th</sup> August 1924. The original Church subsequently became the Parish Hall and is now the home of Aggies Op Shop. More below on Aggies.

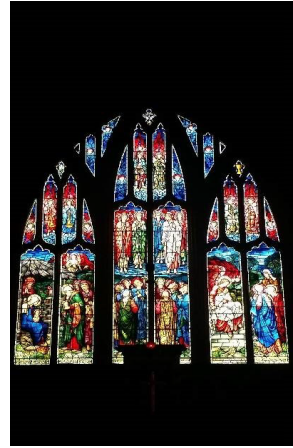
The remaining original 19<sup>th</sup> Century building currently accommodates a Child Care Centre. In the last 30 years, all four buildings have been reroofed.

### ***The Stained Glass Windows***

Our William Morris, stained glass windows are much recognised and admired, Nationally and Internationally. The Art Gallery of South Australia generally include St. Augustine's in their tours of important stained-glass windows around Adelaide.

A history of the windows is in our north-west porch as you enter the Church.

The windows are undeniably beautiful, and they are a wonderful physical feature of the Church which the wider Community very much enjoy visiting. They also exquisitely illustrate magnificent Bible passages and some of Christ's well-known miracles.



## ***The Present operations of the Parish***

### ***Pastoral Staff***

Reverend Kym Smith is the current Priest in Charge on a 0.5 Locum Tenens basis. He has been appointed for a six-month with term commencing in December 2024.

Kym is doing an amazing job and has Blessed the Parish enormously – he achieves an extraordinary amount and contributes far more than the 0.5 basis on which he is retained. Kym does need to return to retirement however so he and his wife Elaine can continue with the other plans that they have made.

### ***Parish Council***

Composed of the Priest, a priest appointed warden, two elected wardens and councillors representing the English speaking and Bi-lingual Mandarin congregations. Council meets monthly.

The purpose of Parish Council is to seek God's will for His Church, to hear from and report on the views and needs of the Congregation and to then to plan and implement the short- and long-term goals and ambitions of the Church.

The Parish Council consists of equal numbers of representatives from the 2 services. The Parish Council is extraordinarily cohesive and is excited to be getting on with the real business of the Church; to play our role in Christ's great rescue mission and to serve and care for those who are struggling and in need, within and also outside the Church membership.

### ***Administration***

Provision is made for a Parish Secretary working 10 -15 hours paid assistance per week.

### ***Financial Status***

We are presently exceedingly blessed with a firm financial basis as a result of our thriving Op Shop, Aggies, and the recent successful lease of one of our buildings to a Faith based Child Care Centre.

In the past, the Parish has attempted but struggled to support two full time ministers. The attached financial statement demonstrates our present capacity to comfortably support future operations under a 1.0 single minister leadership model. We anticipate that our financial capacity will increase in time and that The Lord will provide funds and personnel so that the Church can undertake increased activities in the future.

## ***Worship***

The Unley Parish caters to two distinct language groups. The original English-speaking congregation and the more recent Mandarin speaking congregation.

St Augustine's is at present a relatively traditional Parish in the Diocese of Adelaide. Two worship services are currently held each week, each catering to their respective language-based congregations.

Our Mission Action Plan, which is 4 years old but still expresses the essence of the Congregation's hopes and aspirations, clearly set out a desire to develop a more contemporary style of worship, in part at the 9.30 service, but also to develop an entirely new and contemporary service in the evenings on Sunday.

At present the 9:30am service is a traditional English speaking ABPC Holy Communion service with hymns, led by a very capable music director, accompanied by both piano and organ. We are expectant that there is scope to develop the service with some contemporary worship songs. It is already a very welcoming environment, and visitors often return and become regular attendees.



Laity read the Bible, take the intercessions and assist with Holy Communion.

The active English-speaking congregation numbers around 35-45. The numbers have gradually increased in recent years with the introduction of an English-speaking Minister.

We have a sense that there is significant capacity for increasing the size of the congregation and so serving a much larger community within Unley and beyond. The introduction of Sunday school and Youth programs will be exciting and achievable initiative and will be more easily achieved with a full time Minister leading the Church and assisting the Congregation in their roles.



There is also a regular Alpha program run by the 9.30 Church Warden which reaches a large outside circle of potential future church members. At present people finding faith through Alpha have drifted to other churches, or no regular worship. We are very hopeful that a focus on a dynamic new service format will attract and retain potential new members from outside the church, including Alpha graduates.

The 11:15 am service is a liturgical Chinese-speaking service featuring monthly Holy Communion. The Mandarin congregation includes about 25 adults and 5 children. This bilingual service (Chinese-English) helps migrants and their English-speaking children worship together. It creates a welcoming environment for new migrants to practice their faith while improving their English skills.

The service features contemporary Christian songs led by a band with strong lay participation. Music is integral to the worship experience.



Both services utilise an Audio-visual Projection presentation of the service using PowerPoint, allowing all parishioners and visitors to easily follow the service. A hearing loop is operational in the church providing an improved opportunity to participate for the hearing impaired.

The lay leadership of the Church and the congregations of both services have consistently expressed a desire for unity and cooperation between the 2 services. We look forward to this unity being a reality soon and know that great fruit will be borne for the Kingdom from increased unity within the Church.

### ***Discipleship and Fellowship***

The Mandarin congregation currently offers fortnightly Bible study groups. The Chinese Alpha Film Series is conducted once a year for anyone who is wanting to find out more about Christ. There is also an Alpha course in English conducted once a year by of our English Peoples Warden. This generally attracts participants from outside the Church.

### ***Ministry and Pastoral Care***

There is great scope for both congregations to benefit from a pastoral care program lead and directed by ordained Clergy with active participation from the congregation. Such programs would be conceived of and developed by the Parish Council and the Congregation in consultation with the ordained clergy.

## ***Outreach and Community Service***

### ***Aggies Op Shop***

A major outreach of our Parish is through “Aggies Op Shop” ...

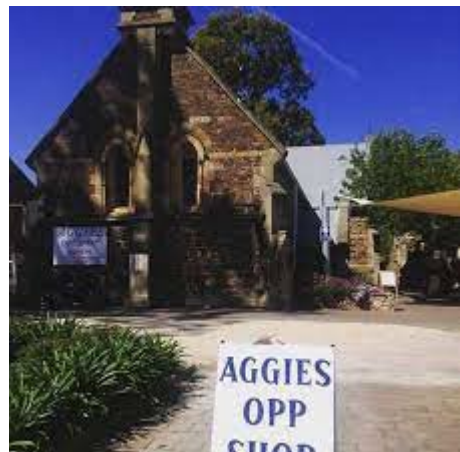


Aggies Op Shop is widely recognised as one of South Australia’s most notable opportunity shops.

Aggies has provided significant contribution to our finances for many years and is an informal but effective church/community conduit. There is enormous potential for the Church to identify and then provide services to members of the immediate community who are in need via the public’s informal interaction with the Church via

Aggies. It will be exciting to explore this potential further.

Aggies is presently staffed by 2 remarkably committed and extremely capable paid staff members. Nadia is employed full time and is quite extraordinary in what she achieves and how she manages her team of volunteers. Susan works part time under Nadia’s direction and is also extraordinarily hardworking. Their remuneration is very modest. Both of them are capable of obtaining less demanding work that would pay them significantly more, but they are completely committed to St Augustine’s and to the potential of the Church to make a real difference in the Community of Unley and beyond.





It has been the intention of Parish Council and the Congregation for many years that the significant funds raised by Aggies annually should be used for purposes of social benefit locally and internationally; to serve the Gospel and fulfil our imperative to tell people about their Saviour and how much He loves them; and to relieve practical suffering and need locally and Internationally



### ***Educare Child Care Centre***

Educare is a tenant occupying one of our buildings. They provide a daily childcare service and have a Christion basis. There is again, a real opportunity for our Church community to engage with and potentially serve the Families who entrust their Children's care to Educare and who may or may not yet have a Faith in Christ. You will see from the attached Financial report that Edu-care provides a significant, reliable stream of income for the Church.



## ***External Missionary Support***

We recognise and seek to meet the needs of others, both locally, nationally or internationally. We are therefore conscious in framing budgets to provide financial aid for others, and we intend to increase that giving as soon as possible.

In the recent past we have been able to provide financial support from parish funds to: BCA (\$4000), Chinese Christian Mission (\$3000), Schools Ministry Group supporting chaplaincy (\$3000). In addition, we support WEEP and have provided donations in recent years. It is our intention to recommence a regular program of financial outreach as soon as possible. We acknowledge that when our Church gives away our time and our resources, we are being obedient to Christ's instruction to care for those in need in His name. We believe that his is how our Church will grow and mature and grow in capacity.

## ***Ecumenical Use of Church***

We have been Blessed with a very strategically positioned, large, very attractive Church building. It has been a joy in the past to provide the Church building to Churches of other denominations for outreach and celebration events.

These have included; a recent Youth Alpha launch of the new Alpha Youth Film series. Approximately 150 Youth Leaders from more than 5 denominations attended the Event which was hosted by Alpha Australia's Youth Team in St Augustine's main Church Building; An inter- Church worship night, hosted by St Augustine's in collaboration with worship leaders from a number of other local Churches, including the Baptist and Lutheran Church, approximately 280 attended; the Alpha Chinese Film series launch, approximately 50 attended from across SA representing most of the major denominations.



In addition, the church is home to various congregations. The Syrian Church Community of South Australia meet for worship at St. Augustine's once a month for their three-hour service.

We hope and aspire to use the Church for many ecumenical events in future, to build up the Body of Christ and the unity and effectiveness of that Body.

## ***Community Use of Church***

The Church has been used regularly by numerous community and music groups.



From small groups who use the rear of the church for music and other endeavours, to groups like the Homicide Victims Support Group.

The church also accommodates larger groups such as the RSL, the Kirking of the Tartans and St Johns for their annual rededication services. We have catered too in the past for Operation Flinders.

The church is used by multiple music groups, including the Unley Community Orchestra and choirs, and hosts regular fundraising concerts and events. The local flute group practices at St. Augustine's every Tuesday morning and the church is used for the carol singing group to practice for their Christmas open air film night. In May 2025, we will be providing the Church building at no fee to a local group who will Host an event to raise funds for cancer research.

We would love to increase the potential for the community of Unley and beyond to use and enjoy the Church's buildings, when practical and appropriate, to foster a sense of belonging between the Church and members of the public and draw them into a relationship with Jesus.

## ***Digital Outreach***

The Parish has a digital presence.

We have a website which can be found at <https://staugustinesanglicanchurchunley.org.au/>

Digital platforms and social media were not seen as a priority by the previous ordained leadership. The website has not been kept up to date and needs review. The Parish Council have felt that it would be appropriate to commit time and resources to this endeavour was once a new Minister was appointed.

## ***The Future***

Our Vision has been identified by the congregation:

***“Celebrating our Christian Heritage, Sharing the Grace of Jesus and Serving the World God loves through the power of the Holy Spirit”***



## ***Our New Priest***

In short, we are seeking a Priest who shares our vision to build a unified and dynamic Church. A Church which will serve and minister to those who are already members, but just as importantly, a Church which will serve and minister to those who don't yet know their Saviour or their own value and potential.

We earnestly seek a family orientated enthusiastic Minister who will be passionate about working with us to unlock the enormous potential of St Augustine's Church and those of us who are already a part of the St Augustine's community.

Our Church is positioned to be a dynamic place to serve, equip and release our Members to lead those outside the Church to discover their Saviour and grow in a relationship with Him. In so doing we will grow ourselves and in our relationship with Jesus and with one another.

We would love to hear from you if you are feeling called to explore the possibility of joining us at St Augustine's Unley.

## ***St. Augustine's Church***

***183 Unley Rd, Unley  
South Australia 5061***

